

## Model 492/2

HIGH-SPEED AIRFLOW FOR COOLING & HEATING

### FEATURES AND BENEFITS

- Reliable Belt-Driven Performance
- Increase Pressure By Up To 137 mbar
- Extremely Energy Efficient
- High-Strength Industrial Design
- Compact Footprint For Easy Installation
- Very Low Maintenance



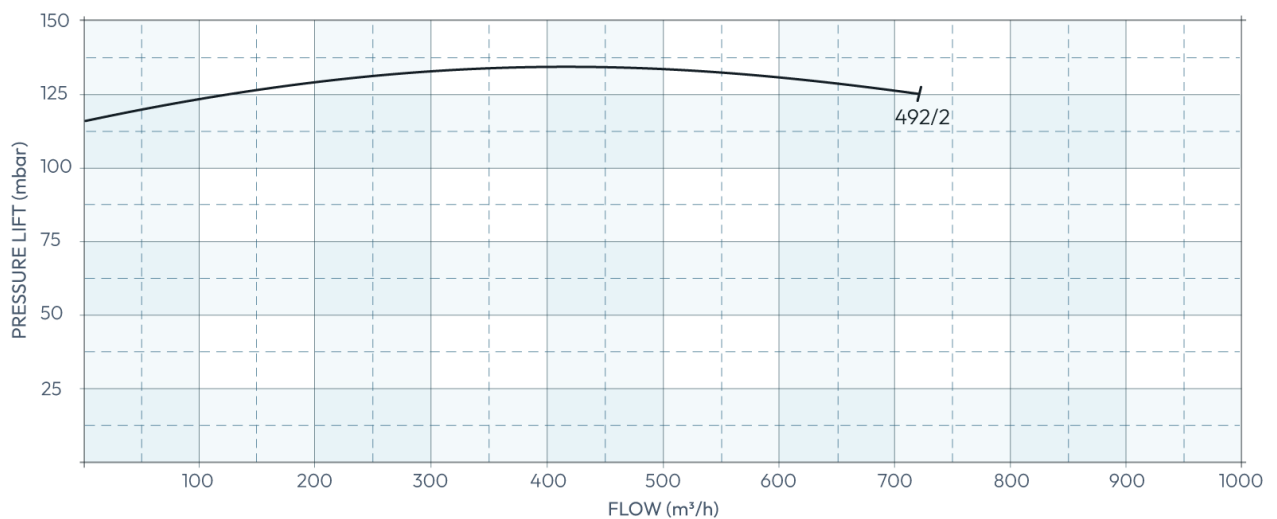
Product supplied may differ from image based on pressure requirements. Image represents Model 428 High Velocity Blower.

|              | 492/2         |
|--------------|---------------|
| Motor        | 4.0 kW        |
| Weight       | 60 kg         |
| Phase        | 3             |
| Noise level* | 84 dB(A)      |
| Voltage      | 380 V - 480 V |
| Frequency    | 50 / 60 Hz    |
| Run current  | 7.2 A         |

\*Noise levels have been measured at a distance of 1m from the blower.

BLOWERS - HIGH VELOCITY

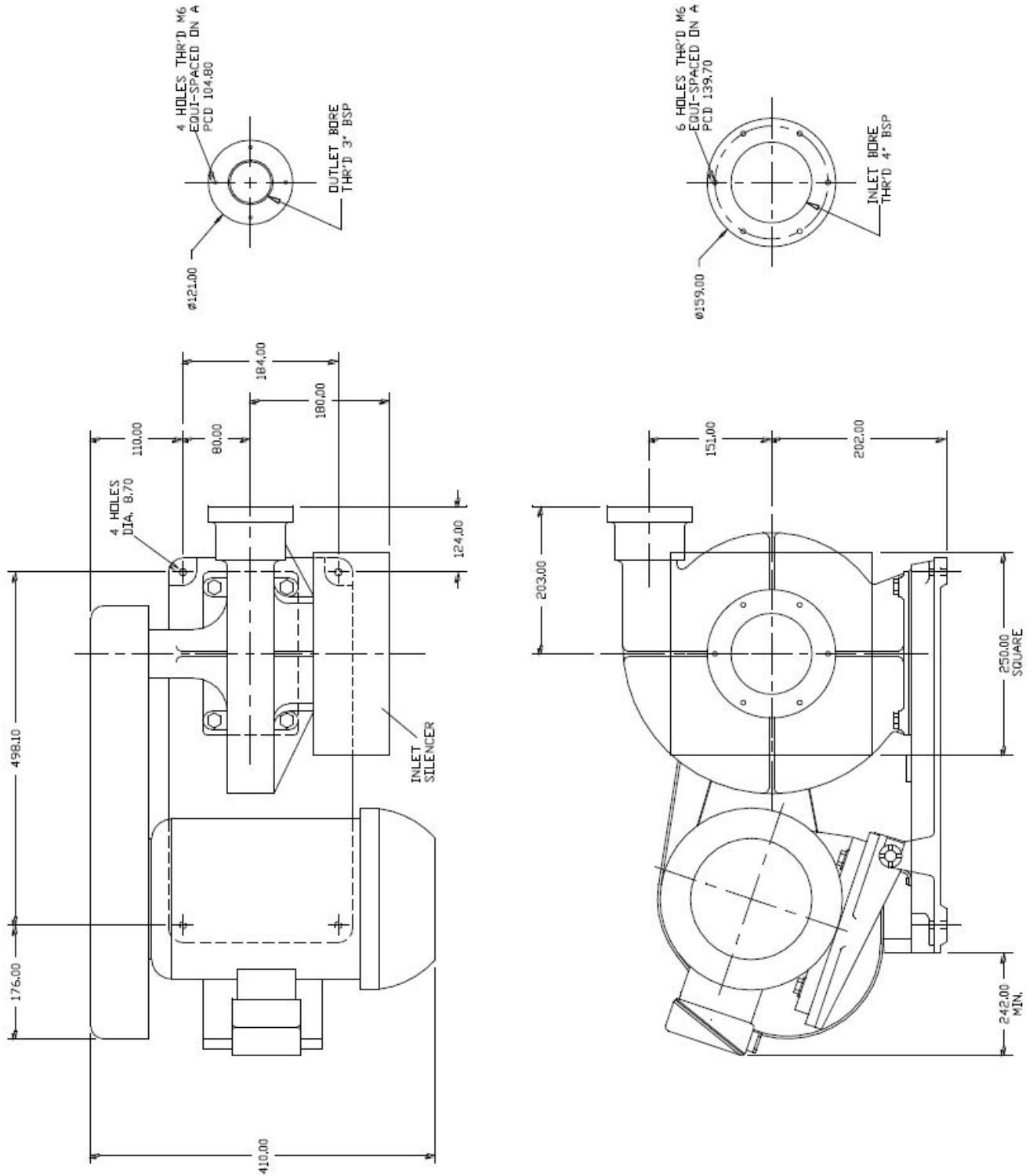
### PERFORMANCE CURVE



## Model 492/2

### DIMENSIONAL DRAWING

BLOWERS - HIGH VELOCITY



All dimensions in mm